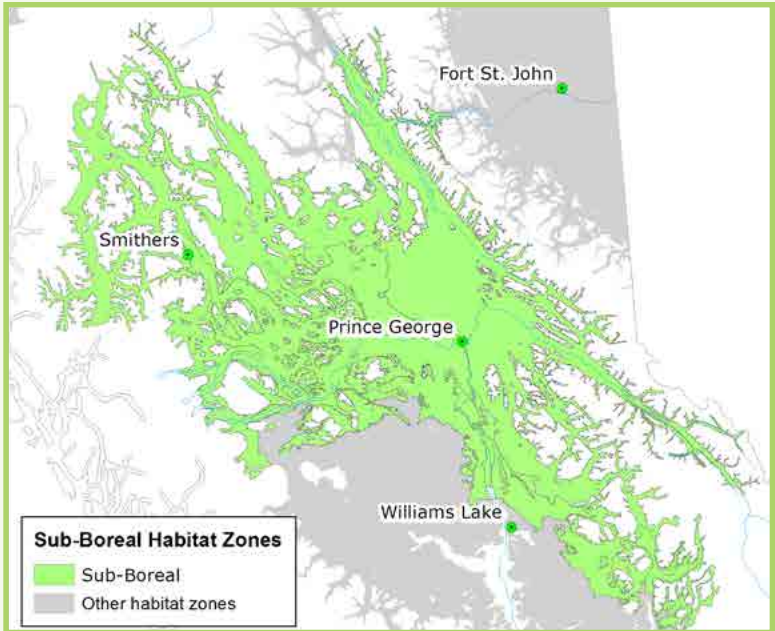


Fisher Habitat: Sub-Boreal Forest*

Structure Identification



Fishers need forests for 4 different life activities: **denning**, **resting**, **foraging**, and **movement**.

These field notes provide a quick reference to identify important structures for fisher denning and resting habitat.

For more information on fishers and fisher habitat visit:
www.BCfisherhabitat.ca

General Retention Guidelines:

- **Big and Ugly:** Select large diameter trees with some type of defect.
- **Defect:** Retain trees and snags with rot, disease, or damage.





Denning Habitat: Fisher are the largest animal in B.C. that requires a tree cavity for keeping babies safe. This is why den trees are often the largest examples of each tree species they use.



Best
Trees to
Retain for
Denning

- **Cottonwood ≥ 90 cm dbh**
- Entrance hole 5–10 cm wide by 7–15 cm tall
- Trees with cavities where bole diameter $> \sim 40$ cm at entrance hole





Resting Habitat (Cavity and Rust Broom Sites) provide fishers with protection from poor weather and predators.

Best
Trees to
Retain for
Resting

Cottonwood ≥ 77 cm dbh

Aspen ≥ 59 cm dbh

Douglas-fir ≥ 97 cm dbh

Hybrid spruce ≥ 39 cm dbh

- Trees with cavities where bole diameter $> \sim 40$ cm at entrance hole, OR
- Trees with rust brooms $> \sim 40$ cm diameter to provide a platform for fishers





Resting Habitat (CWD): CWD provides rest sites for fishers and their prey, especially in winter.





Man-made CWD piles:

- Creating piles through-out cutblocks will help create rest sites in the regenerating stand.
- Pieces should not be stacked neatly, but be in a jumbled pile to create spaces for fishers.

Single Piece CWD	<ul style="list-style-type: none"> • ≥ 35 cm diameter by ≥ 7 m in length • Elevated 25-50 cm above ground
Man-made CWD Piles	<ul style="list-style-type: none"> • Pile dimensions > 3 m wide by 5 m long by 2 m high • CWD piles should have $> 30\%$ pieces > 20 cm diameter > 3 m long



HABITAT CONSERVATION TRUST FOUNDATION

The Fisher Habitat Working Group recognizes the Habitat Conservation Trust Foundation and anglers, hunters, trappers and guides who contribute to the Trust, for making a significant financial contribution to support the British Columbia Fisher Habitat and Forestry Web Module. Without such support, this project would not have been possible.



The Fisher Habitat Working Group gratefully acknowledges the financial support of the Fish and Wildlife Compensation Program for its contribution to the British Columbia Fisher Habitat and Forestry Web Module.

*The guidance in this document is intended to inform fisher habitat managers in B.C., and is not to be interpreted as direction nor is it legally binding.

Contact Information

Richard D. Weir, R.P.Bio. | Carnivore Conservation Specialist
Ecosystems Branch, Ministry of Environment
Email: Rich.Weir@gov.bc.ca | 250.356.8186