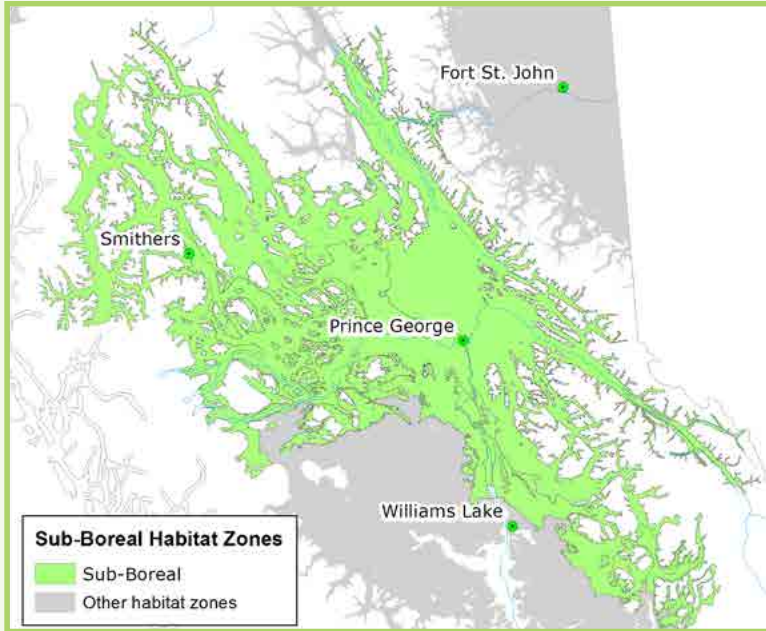


# Fisher Habitat: Sub-Boreal Forest Structure Identification



Fishers need forests for 4 different life activities: **denning**, **resting**, **foraging**, and **movement**.

These field notes provide a quick reference to identify important structures for fisher denning and resting habitat.

For more information on fishers and fisher habitat visit:  
[www.BCfisherhabitat.ca](http://www.BCfisherhabitat.ca)

## General Retention Guidelines:

- **Big and Ugly:** Select large diameter trees with some type of defect.
- **Defect:** Retain trees and snags with rot, disease, or damage.





**Denning Habitat:** Fisher are the largest animal in B.C. that requires a tree cavity for keeping babies safe. This is why den trees are often the largest examples of each tree species they use.





Best  
Trees to  
Retain for  
**Denning**

- **Cottonwood  $\geq 90$  cm dbh**
- Entrance hole 5–10 cm wide by 7–15 cm tall
- Trees with cavities where bole diameter  $> \sim 40$  cm at entrance hole



**Resting Habitat (Cavity and Rust Broom Sites)** provide fishers with protection from poor weather and predators.

Best  
Trees to  
Retain for  
**Resting**

**Cottonwood**  $\geq 77$  cm dbh

**Aspen**  $\geq 59$  cm dbh

**Douglas-fir**  $\geq 97$  cm dbh

**Hybrid spruce**  $\geq 39$  cm dbh

- Trees with cavities where bole diameter  $> \sim 40$  cm at entrance hole, OR
- Trees with rust brooms  $> \sim 40$  cm diameter to provide a platform for fishers





**Resting Habitat (CWD):** CWD provides rest sites for fishers and their prey, especially in winter.



#### **Man-made CWD piles:**

- Creating piles through-out cutblocks will help create rest sites in the regenerating stand.
- Pieces should not be stacked neatly, but be in a jumbled pile to create spaces for fishers.



Single Piece CWD	<ul style="list-style-type: none"><li>• <math>\geq 35</math> cm diameter by <math>\geq 7</math> m in length</li><li>• Elevated 25-50 cm above ground</li></ul>
Man-made CWD Piles	<ul style="list-style-type: none"><li>• Pile dimensions <math>&gt; 3</math> m wide by 5 m long by 2 m high</li><li>• CWD piles should have <math>&gt; 30\%</math> pieces <math>&gt; 20</math> cm diameter <math>&gt; 3</math> m long</li></ul>



HABITAT  
CONSERVATION TRUST  
FOUNDATION

The Fisher Habitat Working Group recognizes the Habitat Conservation Trust Foundation and anglers, hunters, trappers and guides who contribute to the Trust, for making a significant financial contribution to support the British Columbia Fisher Habitat and Forestry Web Module. Without such support, this project would not have been possible.



**FWCP**  
Fish & Wildlife  
COMPENSATION PROGRAM

The Fisher Habitat Working Group gratefully acknowledges the financial support of the Fish and Wildlife Compensation Program for its contribution to the British Columbia Fisher Habitat and Forestry Web Module.

**Contact Information**

Richard D. Weir, R.P.Bio. | Carnivore Conservation Specialist  
Ecosystems Branch, Ministry of Environment  
Email: [Rich.Weir@gov.bc.ca](mailto:Rich.Weir@gov.bc.ca) | 778.698.4390

